

GM  
13

# SREBRNA GÓRA

A CONTEMPORARY CASTLE

[www.remax-polska.pl/living](http://www.remax-polska.pl/living)



GM  
13

GM  
13

In the heart of the Owl Mountains, along the historic route leading to the famous Srebrna Góra Fortress, stands a true contemporary castle - a residence that combines the legend of the place with the highest standard of living.

According to local lore, as early as the 19th century there was a manor house here, where the fortress' highest-ranking officers were quartered. It is said they planned defensive maneuvers here and feasted into the night, telling tales of silver treasures hidden in the mountains. Today, on the site of those old walls, stands a modern castle covering over 1,200 m<sup>2</sup> - as imposing as a fortress, yet filled with light, space, and contemporary luxury.

The location itself is further enhanced by the planned extension of the S8 expressway from Wrocław toward Kłodzko, which will shorten the journey time to Srebrna Góra. Thanks to this convenient access, you can run your business in Wrocław while enjoying the peace and luxury of your own mountain residence.



## ARCHITECTURE

The building's form draws inspiration from European castles and manors of the late 19th and early 20th centuries, as well as from the Tudor style, characteristic of England's historic residences.

Hallmarks of this architecture include half-timbered construction with wooden beams contrasting against light plaster, steeply pitched roofs covered with natural slate, large windows with decorative muntins, and ornate gables. These features give the residence both a stately and welcoming character. The main entrance, framed by a stone portal and blooming rhododendrons, leads through monumental carved wooden doors beneath a beautiful

timber portico. The entire design harmoniously blends with the surrounding landscape thanks to the extensive garden, lush greenery, and natural materials used on the façade.

Outside, a panoramic terrace of over 100 square meters awaits, along with a garden featuring natural stone paths and a private, stocked pond - a true sanctuary amid the mountain scenery. Modern technologies - Smart Home, heat pumps, mechanical ventilation with heat recovery, and a dedicated server room - are discreetly hidden behind the classic, elegant façade. Wooden windows, a stylish tiled stove, a slate roof, and a granite driveway underscore the exceptional character of the residence.



GM  
13



6 Bedrooms



3 F Bathrooms



3 H Bathrooms



Pool/Spa



Entertainment room



Triple garage



Total area  
1,200 m<sup>2</sup>



Guest  
apartment



Plot  
4,800 m<sup>2</sup>





## INTERIORS

The interiors of the residence are designed with royal flair: a spacious living room with exclusive leather sofas, an elegant study, a club-style entertainment room with a home cinema, bar, billiards, and ping-pong table, as well as a unique wellness area with a swimming pool and sauna for complete relaxation.

Residents can enjoy six comfortable bedrooms, three full bathrooms, three additional toilets, and two kitchens equipped with top-class appliances.

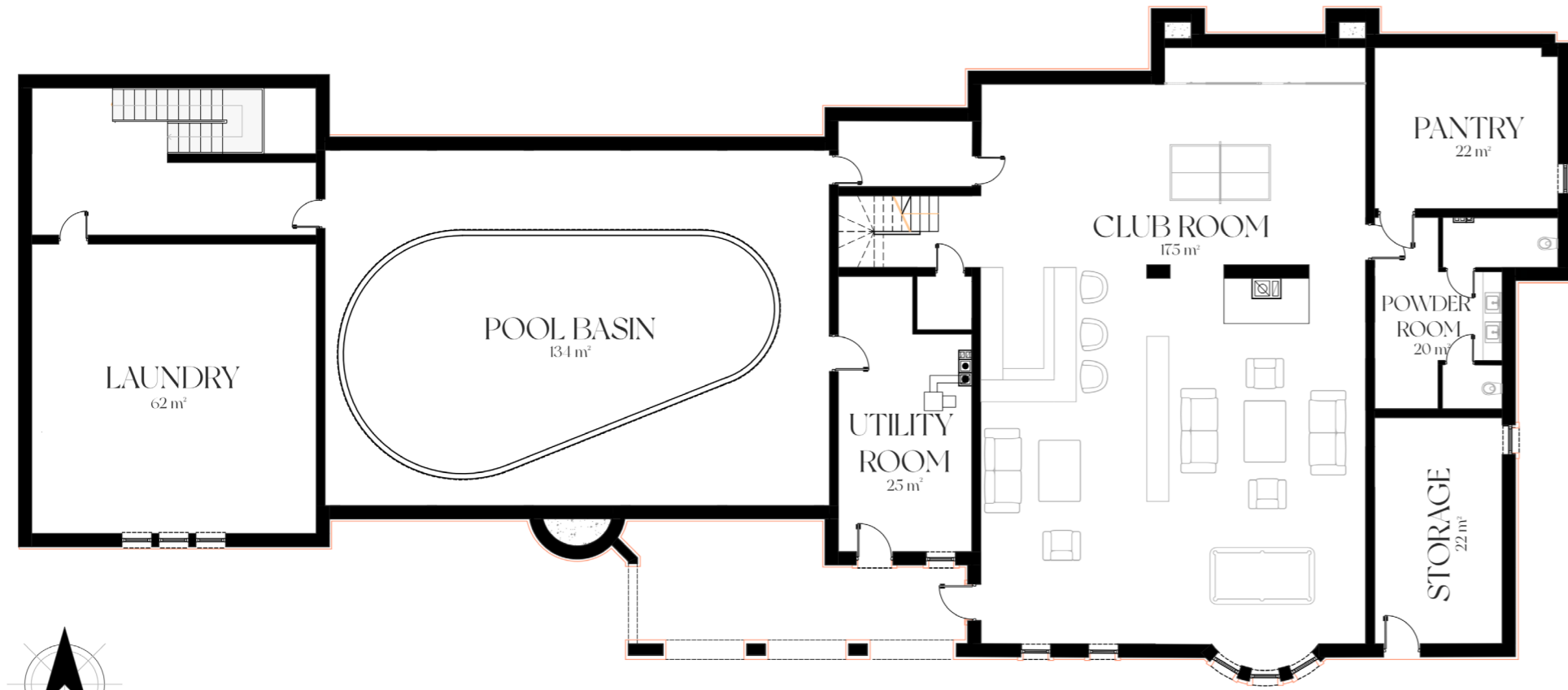
An additional highlight is the apartment above the garage, comprising two bedrooms, a bathroom, and its own kitchen - ideal as independent quarters for guests or staff.



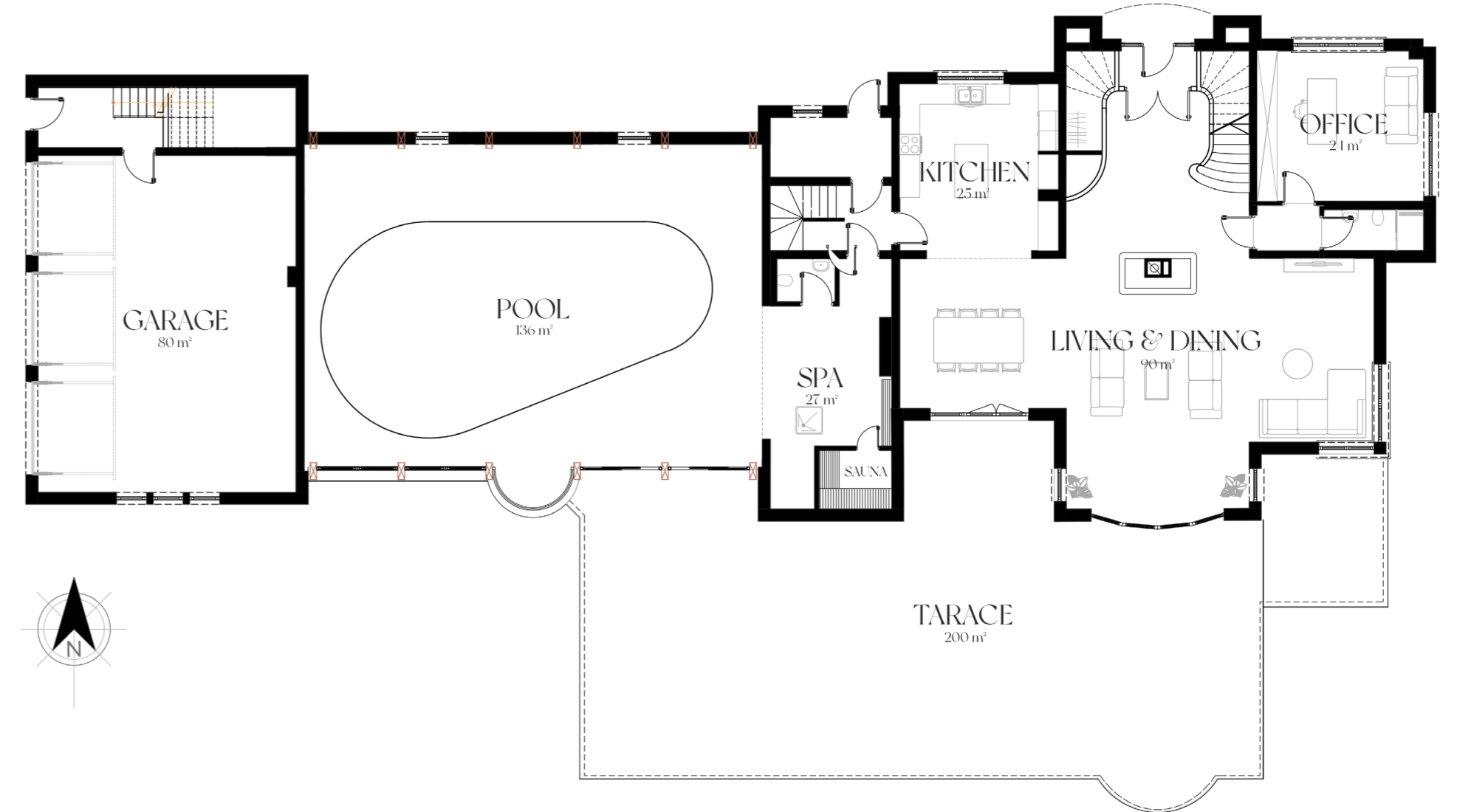
## POOL AREA

The swimming pool is lined with shimmering glass mosaic tiles that emphasize the luxurious character of the space, and its edge is finished with hand-formed sandstone.

In the pool area there is also a spiral shower lined with the same glass mosaic as the pool, and a Finnish sauna that accommodates up to 8 people. From the pool area, you can step directly out onto the terrace with a view of the mountains, allowing you to enjoy the fresh air and the beauty of the surrounding nature.

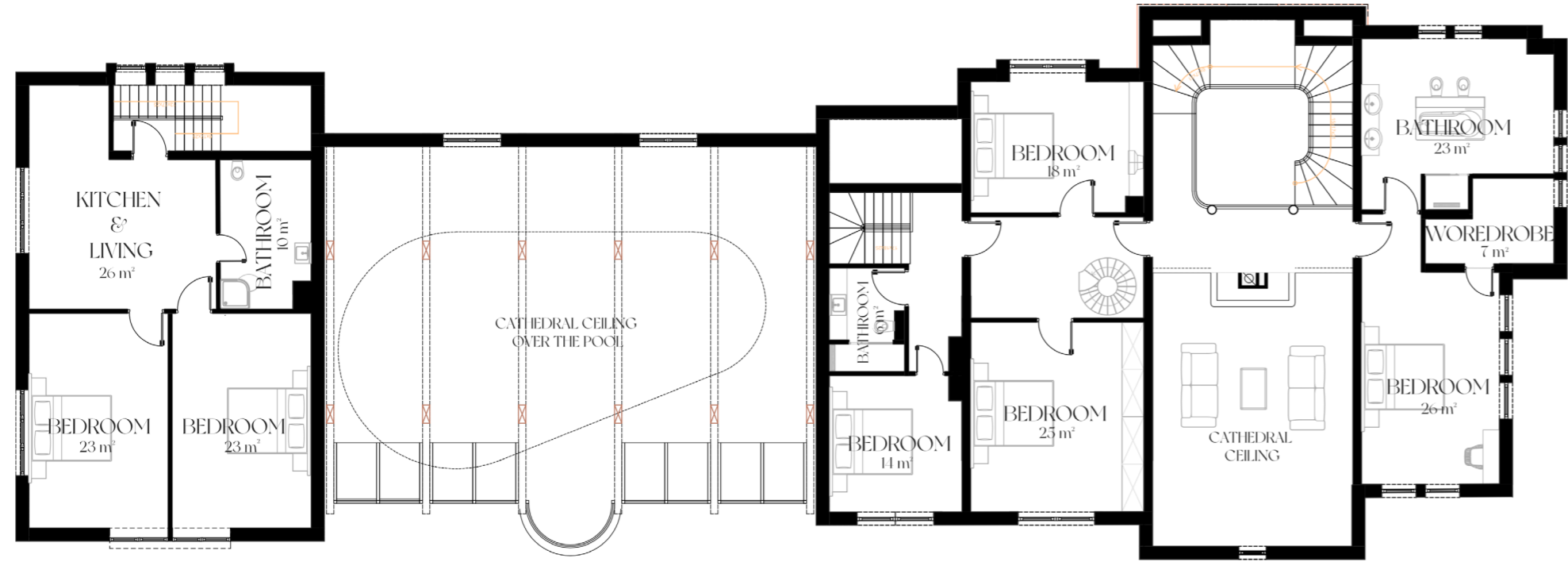


BASEMENT



GROUND FLOOR





FIRST FLOOR



LIVE WHERE HISTORY MEETS LUXURY

EXCLUSIVE LISTING AGENTS

**EWELINA SENDECKA**

[ewelina.sendecka@remax-polska.pl](mailto:ewelina.sendecka@remax-polska.pl)

+48 502 039 137



**WOJCIECH GOZDEK**

[wojciech.gozdek@remax-polska.pl](mailto:wojciech.gozdek@remax-polska.pl)

+48 794 077 177



13 Górne Miasto Street, Srebrna Góra / POLAND